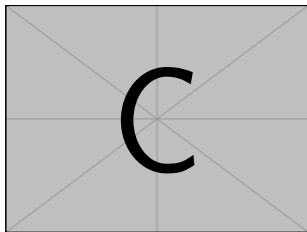


# Title

Subtitle



**Mattia Puddu**

mattiapuddu@icloud.com

Institute

**Supervisors:** Supervisor  
Second Supervisor

**Examiners:** Examiner  
Second Examiner

# Navigation and Presentation Commands

---

# Navigation and Presentation Commands

---

## Sections



You can divide the document using

```
\section{Parte}
```

This way, only the sections belonging to the current part are shown in the sidebar.

## Alert

This presentation is divided into sections: take a look at the sidebar to see the effect.

# Navigation and Presentation Commands

---

Overlays



With the command

`\pause`

only part of the slide is shown,

With the command

`\pause`

only part of the slide is shown, and as you proceed, the rest appears.  
Check out the behaviour of the progress bar!

With

`\only<3,4>{Topic}`

the content is shown only on slide repetitions number 3 and 4. You can customize on which slide numbers the content appears:

With the command

`\pause`

only part of the slide is shown, and as you proceed, the rest appears.  
Check out the behaviour of the progress bar!

With

`\only<3,4>{Topic}`

the content is shown only on slide repetitions number 3 and 4. You can  
customize on which slide numbers the content appears:

This is the third repetition...



With the command

`\pause`

only part of the slide is shown, and as you proceed, the rest appears.  
Check out the behaviour of the progress bar!

With

`\only<3,4>{Topic}`

the content is shown only on slide repetitions number 3 and 4. You can customize on which slide numbers the content appears:

And this is the fourth one!



With

```
\onslide<3>{Content}
```

when the content is not shown, it still leaves blank space where it would appear:

This is the first repetition...



With

```
\onslide<3>{Content}
```

when the content is not shown, it still leaves blank space where it would appear:

And this is the second one!

This concept can also be applied to graphical effects - for example:

```
\textbf<5>{Text}
```



We can achieve the same effects within a limited area using

```
\begin{overlayarea}{\textwidth}{3cm}  
  \only<1>{First repetition}  
  \only<2>{Second repetition}  
\end{overlayarea}
```

First repetition



We can achieve the same effects within a limited area using

```
\begin{overlayarea}{\textwidth}{3cm}  
  \only<1>{First repetition}  
  \only<2>{Second repetition}  
\end{overlayarea}
```

Second repetition

# Navigation and Presentation Commands

---

Blocks



```
\begin{block}{Normal block}Text\end{block}
```

Normal block

Text

```
\begin{alertblock}{Alert block}Text\end{alertblock}
```

Alert block

Text

```
\begin{exampleblock}{Example block}Text\end{exampleblock}
```

Example block

Text

# Multimedia

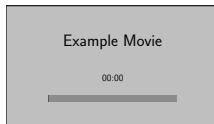
---



With

```
\embedvideo*{\includegraphics[scale=.25]  
  {AuxiliaryFiles/Videos/Test.mp4}}{Label}
```

we can insert a video.



## Alert

It does not work with pause commands, and as far as I know, Overleaf does not support videos; Adobe Acrobat is fine to use this feature  
Only modify the video filename 'Test.mp4' and the options inside the square brackets

# Environments

---



## Theorem

Statement

**Proof** Proof text



## Proposition

Statement

## Lemma

Statement

## Corollary

Statement



Navigation and  
Presentation  
Commands

Multimedia

Environments

Description, Itemize  
Hyperlinks,  
Citations, URLs  
The "column"  
environment

New commands

PGF and  
Tikzpicture

## Definition

Text

## Example

Text

## Remark

Text



## Description

**Label 1**    Text

**Label 2**    Text

## Itemize

- ◇ Text
- ◇ Text

# Environments

---

Hyperlinks, Citations, URLs

A hyperlink is created with

```
\label{Label}
```

and referenced with

```
\ref{Label}
```



A citation to a book in the bibliography is made with

```
\cite{LabelBook}
```

To insert a link, you can use

```
\url{https://www.google.com}
```



# Environments

---

The "column" environment



To break text into multiple columns (or, for example, to position an image), you can use a command like this:

```
\begin{columns}[T]  
\column{.5\textwidth}Test1  
\column{.5\textwidth}Test2  
\end{columns}
```

Test1

Test2



If used with the option below, a column can be made to appear only on certain slides:

```
\begin{columns}<1>[T]
\column{.5\textwidth}Test1      \column{.5\textwidth}
\end{columns}
\begin{columns}<2>[T]
\column{.5\textwidth}            \column{.5\textwidth}Test2
\end{columns}
\begin{columns}<3>[T]
\column{.5\textwidth}Test1      \column{.5\textwidth}Test2
\end{columns}
```

Test1

If used with the option below, a column can be made to appear only on certain slides:

```
\begin{columns}<1>[T]
\column{.5\textwidth}Test1      \column{.5\textwidth}
\end{columns}
\begin{columns}<2>[T]
\column{.5\textwidth}            \column{.5\textwidth}Test2
\end{columns}
\begin{columns}<3>[T]
\column{.5\textwidth}Test1      \column{.5\textwidth}Test2
\end{columns}
```

Test2

If used with the option below, a column can be made to appear only on certain slides:

```
\begin{columns}<1>[T]
\column{.5\textwidth}Test1      \column{.5\textwidth}
\end{columns}
\begin{columns}<2>[T]
\column{.5\textwidth}            \column{.5\textwidth}Test2
\end{columns}
\begin{columns}<3>[T]
\column{.5\textwidth}Test1      \column{.5\textwidth}Test2
\end{columns}
```

Test1

Test2

# New commands

---



The various commands presented in my other templates (book, article) compatible with Beamer can be used. A list of these commands is provided in those other templates, which can be found at the following link:

<https://mattiapuddu25.github.io/index.html>

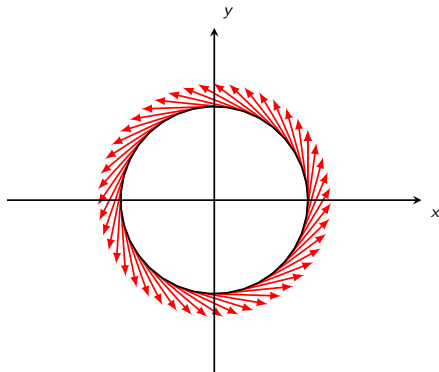
# PGF and Tikzpicture

---

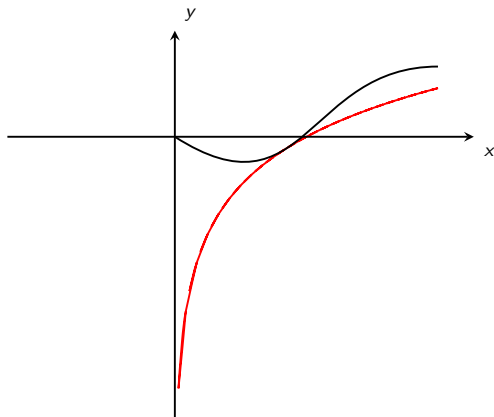




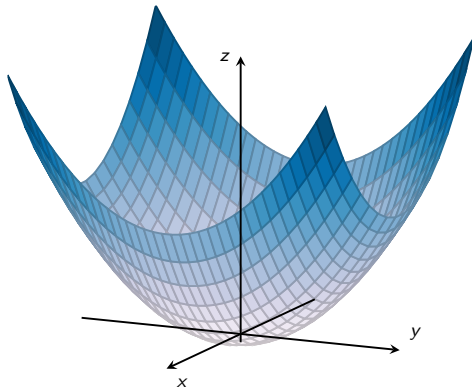
As with commands, graphs can also be created in Beamer using pgfplots and TikZ. Here I present some examples (different from those I included in the book and Beamer templates):



**Figure 1.** Parametrizations



**Figure 2.** Interpolation and paths



**Figure 3.** 3D Surfaces

**Thanks for your attention!**

Backup Slide